



Pycroft Way, N9 9XZ  
London

kings  
GROUP



## Pycroft Way, N9 9XZ

- Kings Are Pleased To Present This
- One Bedroom Flat
- Situated On The Second Floor
- 15ft Lounge/Diner & Semi Open Plan Kitchen
- Loft Storage & Double Glazed Windows
- Residents Allocated Parking
- 958 Year Lease
- Service Charge £1,461.06pa, Ground Rent £0pa
- Walking Distance to Silver Street Train Station
- Council Tax Band B

Offers Over £210,000



KINGS are pleased to present this One Bedroom flat situated on the second floor of a purpose built development, available with an EXTENDED 958 YEAR LEASE. The well presented property features ALLOCATED PARKING, well kept communal grounds, a semi open plan kitchen, a 15FT LOUNGE/DINER, loft access for storage and DOUBLE GLAZED WINDOWS.

Located only moments away from the lovely Pymmes Park, it is also within WALKING DISTANCE of North Middlesex Hospital and Silver Street train station with a regular service to the city. There is also good access to the A406 North Circular Road. The property is situated within close proximity to Fore Street with all the shops, restaurants and amenities it has to offer making this an IDEAL FIRST TIME BUY or as a sound investment.

Council Tax Band B

Lease Remaining - 958 Years Remaining (999 years from 1 February 1984)

Service Charge - £1,461.06 Per Annum/£121.75 Per Month

Ground Rent - £0 Per Annum

Flood Risk - Rivers & Seas: No Risk, Surface Water: Very Low

Construction Type - Standard Construction (Brick, Tile)

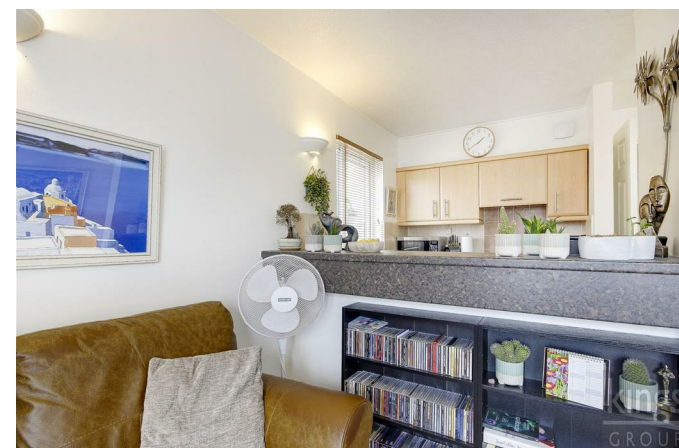
#### ENTRANCE HALL

**LOUNGE/DINER 15'7 x 13' (4.75m x 3.96m)**

**KITCHEN 7'3 x 5'11 (2.21m x 1.80m)**

**BEDROOM 10'8 x 9'1 (3.25m x 2.77m)**

**SHOWER ROOM 7'3 x 5'11 (2.21m x 1.80m)**

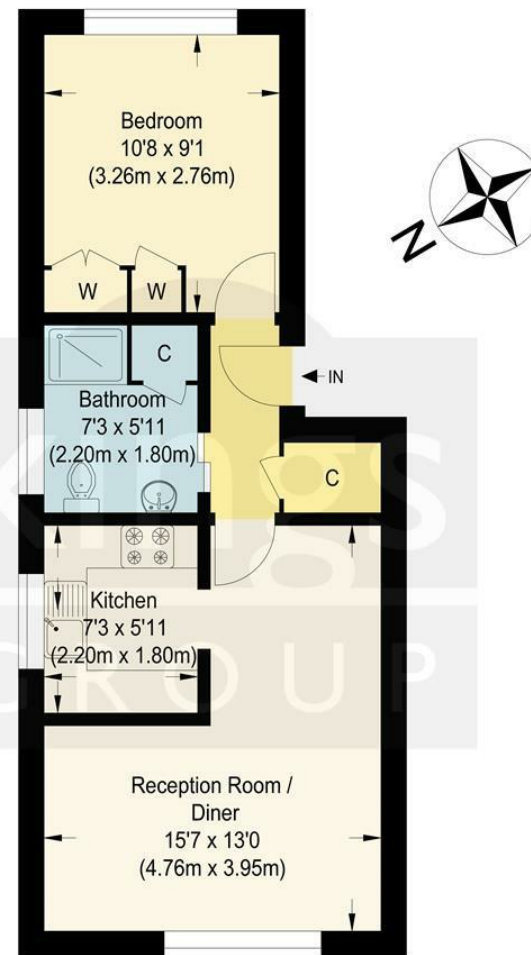
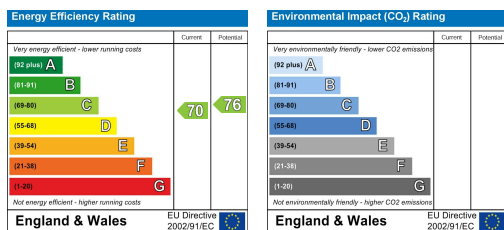




king  
GROU







Approximate Gross Internal Floor Area : 35.90 sq m / 386.42 sq ft  
Illustration for identification purposes only, measurements are approximate, not to scale.

6 Church Street, Edmonton, London, N9  
9DX

